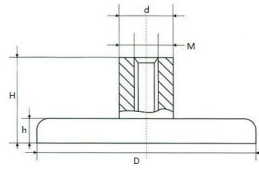


NINGBO BEILUN MEANK MAGNETICS CO.,LTD

Website: www.magnetic-holders.com

E-mail: sales@magnetic-holders.com

Specification of standard ferrite cup magnet with internal(female) threaded screw bushing



| Model | Dimension | | | | | Pull Force (N) |
|---------------|-----------|-------|-------|-------|-------|-------------------|
| | D(mm) | d(mm) | H(mm) | h(mm) | M(mm) | |
| Ferrite-D-10 | 10 | 6 | 11.5 | 4.5 | M3 | 4 |
| Ferrite-D-13 | 13 | 6 | 11.5 | 4.5 | M3 | 10 |
| Ferrite-D-16 | 16 | 6 | 11.5 | 4.5 | M3 | 18 |
| Ferrite-D-20 | 20 | 6 | 13 | 6.0 | M3 | 30 |
| Ferrite-D-25 | 25 | 8 | 15 | 7.0 | M4 | 40 |
| Ferrite-D-32 | 32 | 8 | 15 | 7.0 | M4 | 80 |
| Ferrite-D-36 | 36 | 8 | 16 | 8.0 | M4 | 10.0 |
| Ferrite-D-40 | 40 | 10 | 18 | 8.0 | M5 | 125 |
| Ferrite-D-47 | 47 | 8 | 17 | 9.0 | M4 | 180 |
| Ferrite-D-50 | 50 | 12 | 22 | 10.0 | M6 | 220 |
| Ferrite-D-57 | 57 | 8 | 18.5 | 10.5 | M4 | 280 |
| Ferrite-D-63 | 63 | 15 | 30 | 14.0 | M8 | 350 |
| Ferrite-D-80 | 80 | 20 | 34 | 18.0 | M10 | 600 |
| Ferrite-D-100 | 100 | 22 | 43 | 22.0 | M12 | 900 |
| Ferrite-D-125 | 125 | 25 | 50 | 26.0 | M14 | 1300 |